

List of pages in this Trip Kit

Trip Kit Index

Airport Information For UDYZ

Terminal Charts For UDYZ

Revision Letter For Cycle 23-2015

Change Notices

Notebook

General Information

Location: YEREVAN ARM
ICAO/IATA: UDYZ / EVN
Lat/Long: N40° 08.8', E044° 23.8'
Elevation: 2838 ft

Airport Use: Public
Daylight Savings: Not Observed
UTC Conversion: -4:00 = UTC
Magnetic Variation: 5.0° E

Fuel Types: Jet A-1
Repair Types: Minor Airframe, Minor Engine
Customs: Yes
Airport Type: IFR
Landing Fee: Yes
Control Tower: Yes
Jet Start Unit: No
LLWS Alert: No
Beacon: No

Sunrise: 0347 Z
Sunset: 1347 Z

Runway Information

Runway: 27
Length x Width: 12631 ft x 184 ft
Surface Type: asphalt
TDZ-Elev: 2838 ft
Lighting: Edge, Centerline

Runway: 09
Length x Width: 12631 ft x 184 ft
Surface Type: asphalt
TDZ-Elev: 2800 ft
Lighting: Edge, ALS, Centerline, TDZ

Communication Information

ATIS: 119.500
Yerevan Tower: 120.900
Yerevan Ground: 119.000
Yerevan Approach: 126.000

UDYZ/EVN ZVARTNOTS



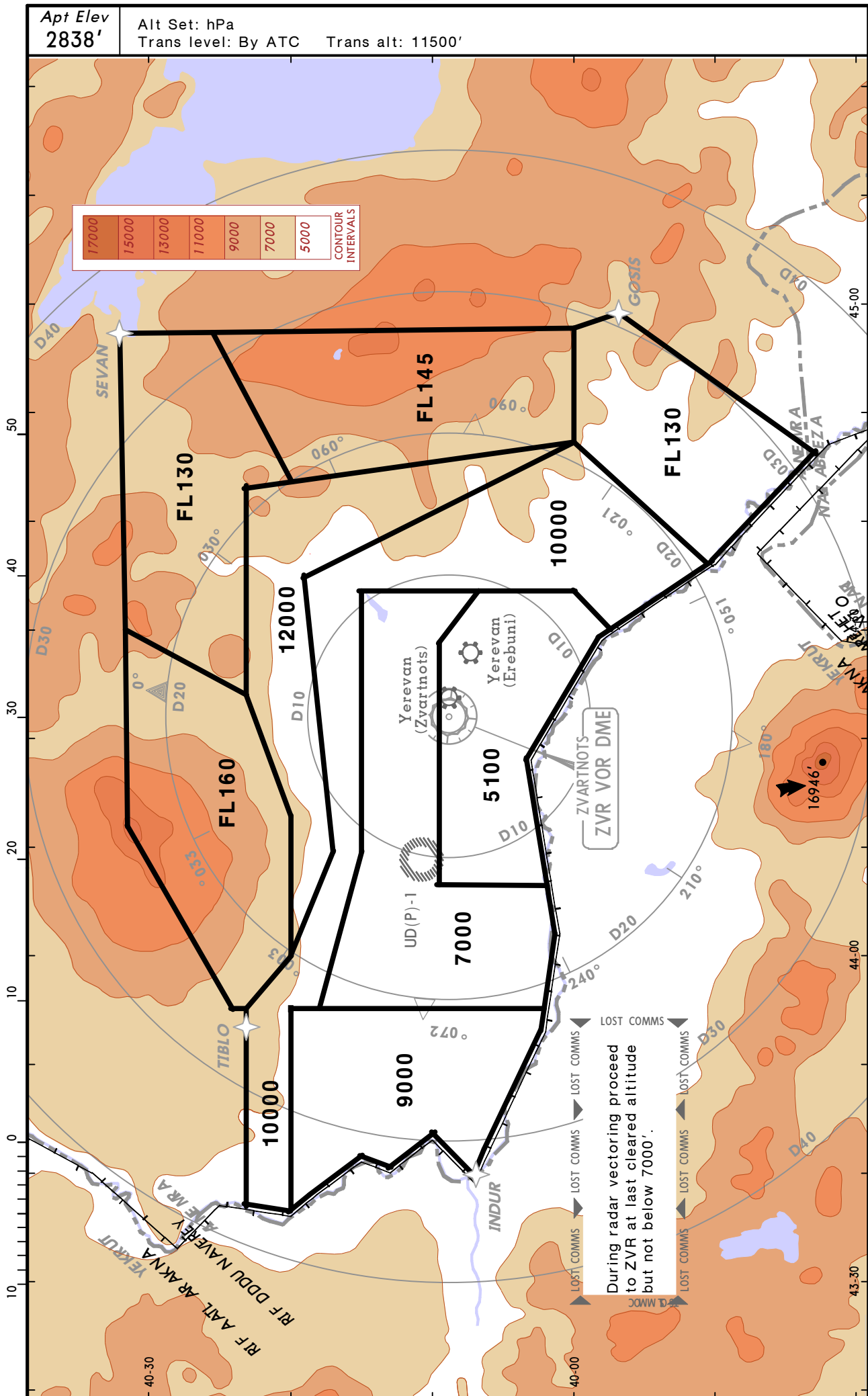
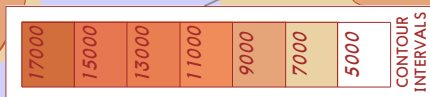
YEREVAN, ARMENIA

7 DEC 12 **10-1R**

Eff 13 Dec

RADAR MINIMUM ALTITUDES

Apt Elev **2838'**
Alt Set: hPa
Trans level: By ATC Trans alt: 11500'



During radar vectoring proceed to ZVR at last cleared altitude but not below 7000'.

UDYZ/EVN
ZVARTNOTS

JEPPESSEN

YEREVAN, ARMENIA

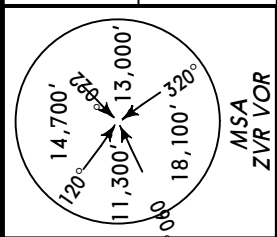
7 DEC 12

10-2

Eff 13 Dec

RNAV STAR

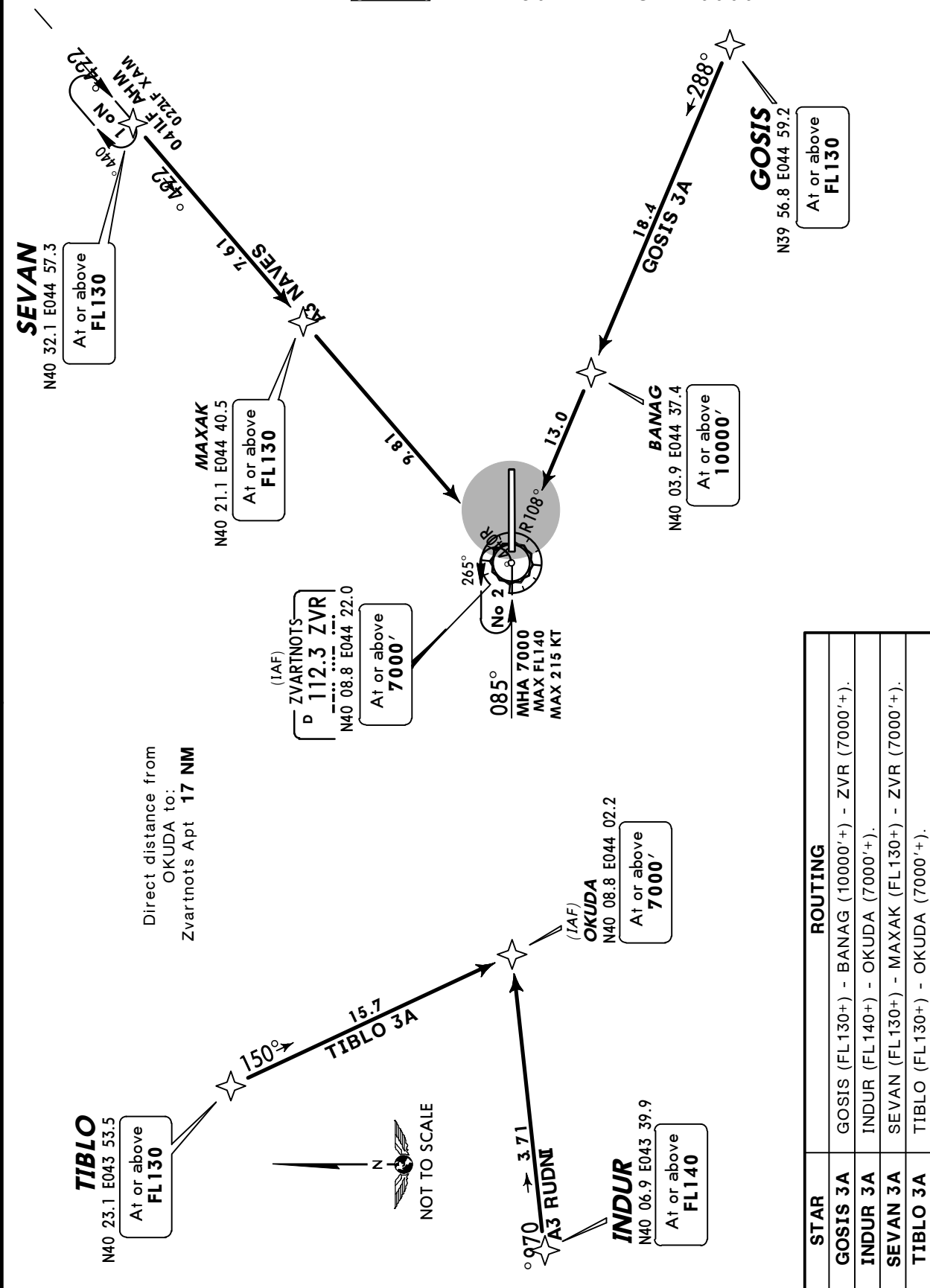
ATIS 119.5 Apt Elev 2838' Alt Set: hPa
Trans level: By ATC Trans alt: 11500'
Non RNAV equipped ACFT advise ATC and EXPECT RADAR vectors.



GOSIS 3A [GOSI3A], INDUR 3A [INDU3A]
SEVAN 3A [SEVA3A], TIBLO 3A [TIBL3A]
RWY 09 RNAV ARRIVALS

RNAV 1 (GNSS)

~~SPEEDS~~ MAX 230 KT BELOW 10000'



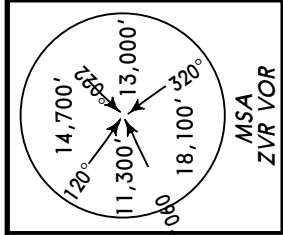
STAR	ROUTING
GOSIS 3A	GOSIS (FL130+) - BANAG (10000'+) - ZVR (7000'+).
INDUR 3A	INDUR (FL140+) - OKUDA (7000'+).
SEVAN 3A	SEVAN (FL130+) - MAXAK (FL130+) - ZVR (7000'+).
TIBLO 3A	TIBLO (FL130+) - OKUDA (7000'+).

UDYZ/EVN
ZVARTNOTS

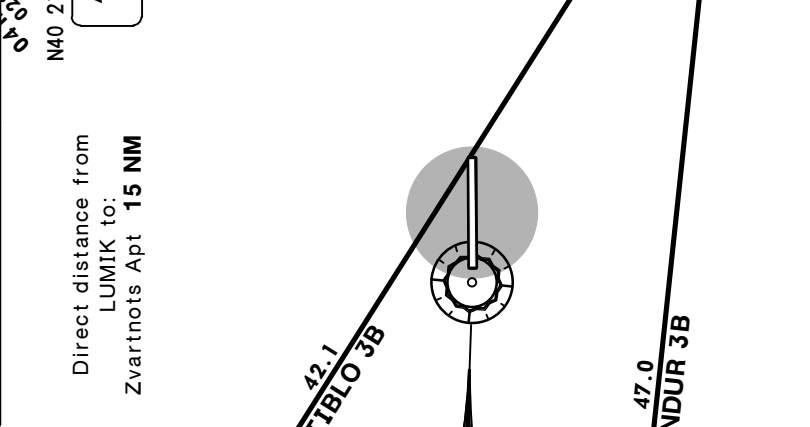
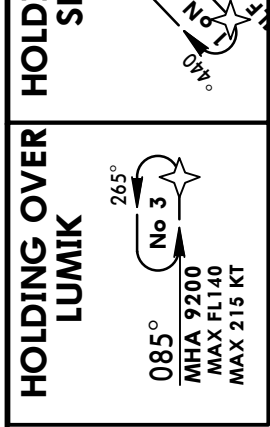
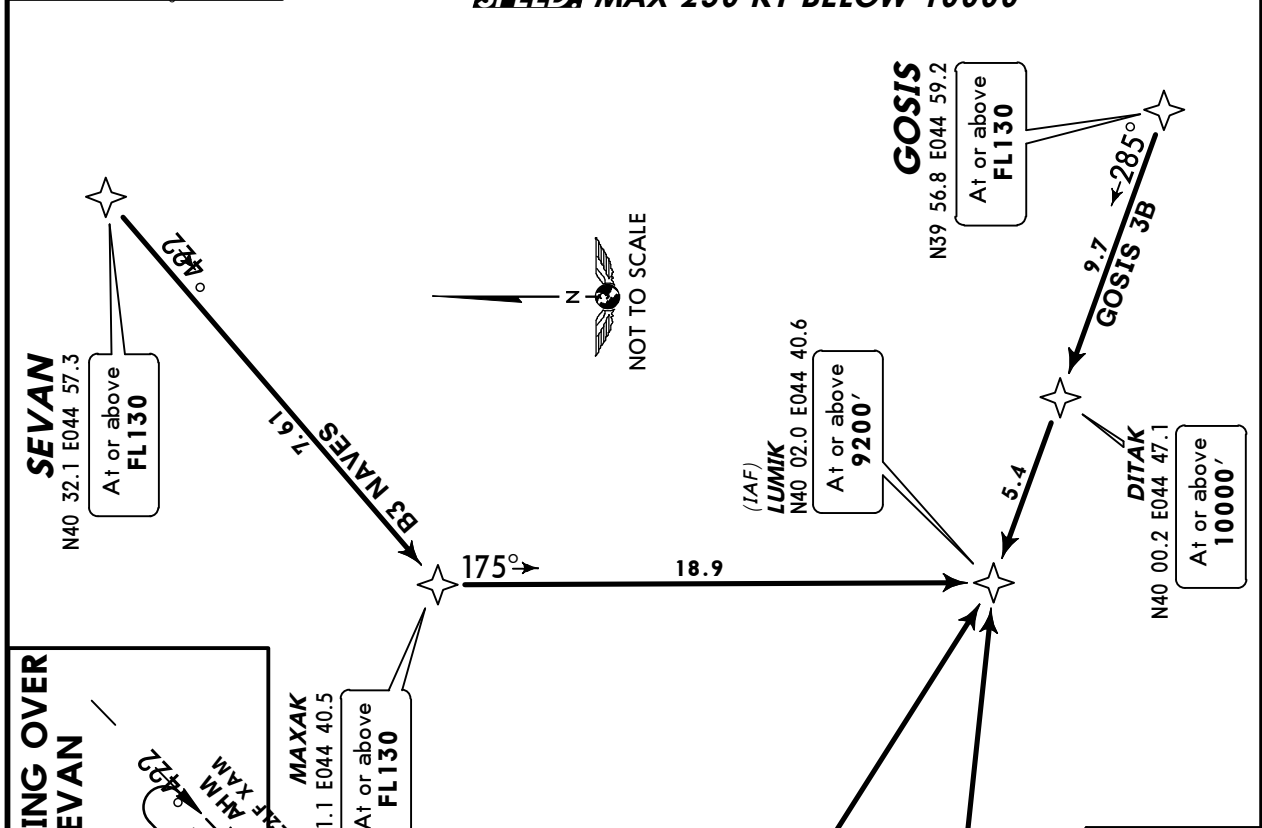
JEPPESEN
7 DEC 12 **10-2A** Eff 13 Dec

YEREVAN, ARMENIA
RNAV STAR

ATIS **119.5** Apt Elev **2838'** Alt Set: hPa
Trans level: By ATC Trans alt: 11500'
Non RNAV equipped ACFT advise ATC and EXPECT RADAR vectors.



GOSIS 3B [GOSI3B], INDUR 3B [INDU3B]
SEVAN 3B [SEVA3B], TIBLO 3B [TIBL3B]
RWY 27 RNAV ARRIVALS
RNAV 1 (GNSS)
SPEEDS MAX 230 KT BELOW 10000'



STAR	ROUTING
GOSIS 3B	GOSIS (FL130+) - DITAK (10000'+) - LUMIK (9200'+).
INDUR 3B	INDUR (FL140+) - LUMIK (9200'+).
SEVAN 3B	SEVAN (FL130+) - MAXAK (FL130+) - LUMIK (9200'+).
TIBLO 3B	TIBLO (FL130+) - LUMIK (9200'+).

UDYZ/EVN
ZVARTNOTS

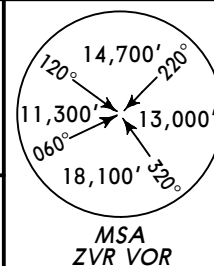
JEPPESEN
21 DEC 12 10-3

YEREVAN, ARMENIA
RNAV SID

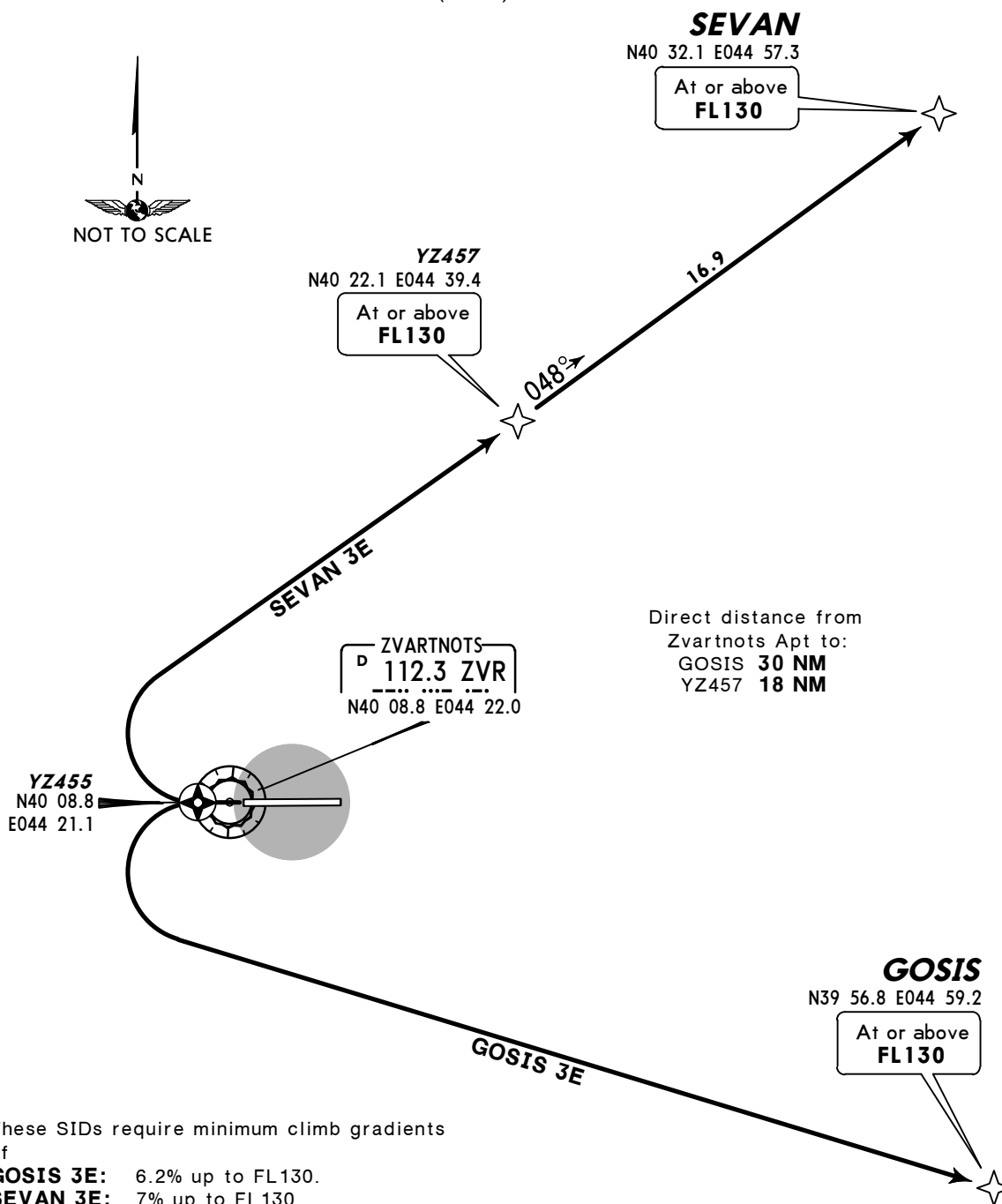
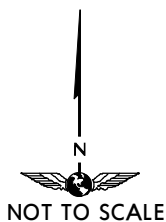
YEREVAN
Approach
126.0

Apt Elev
2838'

Trans level: By ATC Trans alt: 11500'
1. Contact YEREVAN Approach immediately after take-off.
2. SIDs are also minimum noise routings. Strict adherence within the limits of performance criteria is mandatory.



**GOSIS 3E [GOSI3E]
SEVAN 3E [SEVA3E]
RWY 27 RNAV DEPARTURES
RNAV 1 (GNSS)**



These SIDs require minimum climb gradients of

GOSIS 3E: 6.2% up to FL130.

SEVAN 3E: 7% up to FL130.

Gnd speed-KT	75	100	150	200	250	300
7% V/V(fpm)	532	709	1063	1418	1772	2127
6.2% V/V(fpm)	471	628	942	1256	1570	1884

If unable to comply advise ATC prior take-off and request alternate clearance.

Initial turns MAX 210 KT, bank angle 20°

SID	ROUTING
GOSIS 3E	YZ455 - GOSIS (FL130+).
SEVAN 3E	YZ455 - YZ457 (FL130+) - SEVAN (FL130+).

UDYZ/EVN
ZVARTNOTS

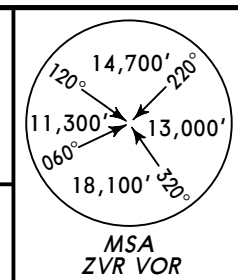
JEPPESEN
21 DEC 12 **(10-3A)**

YEREVAN, ARMENIA
RNAV SID

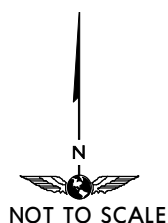
YEREVAN Approach 126.0
Apt Elev 2838'

Trans level: By ATC Trans alt: 11500'

- Contact YEREVAN Approach immediately after take-off.
- SIDs are also minimum noise routings. Strict adherence within the limits of performance criteria is mandatory.



GOSIS 3H [GOSI3H]
SEVAN 3H [SEVA3H]
RWY 09 RNAV DEPARTURES
RNAV 1 (GNSS)



SEVAN
N40 32.1 E044 57.3
At or above
FL130

YZ453
N40 20.5 E044 41.5
At or above
FL130

ZVARTNOTS
D 112.3 ZVR
N40 08.8 E044 22.0

Direct distance from
Zvartnots Apt to:
GOSIS **30 NM**
YZ453 **18 NM**

YZ450
N40 08.8 E044 26.3

GOSIS 3H
SEVAN 3H

GOSIS
N39 56.8 E044 59.2
At or above
FL130

These SIDs require minimum climb gradients of

GOSIS 3H: 6.1% up to FL130.

SEVAN 3H: 6.6% up to FL130.

Gnd speed-KT	75	100	150	200	250	300
6.6% V/V(fpm)	501	668	1003	1337	1671	2005
6.1% V/V(fpm)	463	618	927	1235	1544	1853

If unable to comply advise ATC prior take-off and request alternate clearance.

Initial turns MAX 210 KT, bank angle 20°

SID	ROUTING
GOSIS 3H	YZ450 - GOSIS (FL130+).
SEVAN 3H	YZ450 - YZ453 (FL130+) - SEVAN (FL130+).

UDYZ/EVN
ZVARTNOTS

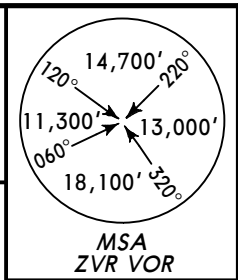
JEPPESEN
7 DEC 12 **(10-3B)** **Eff 13 Dec**

YEREVAN, ARMENIA
RNAV SID

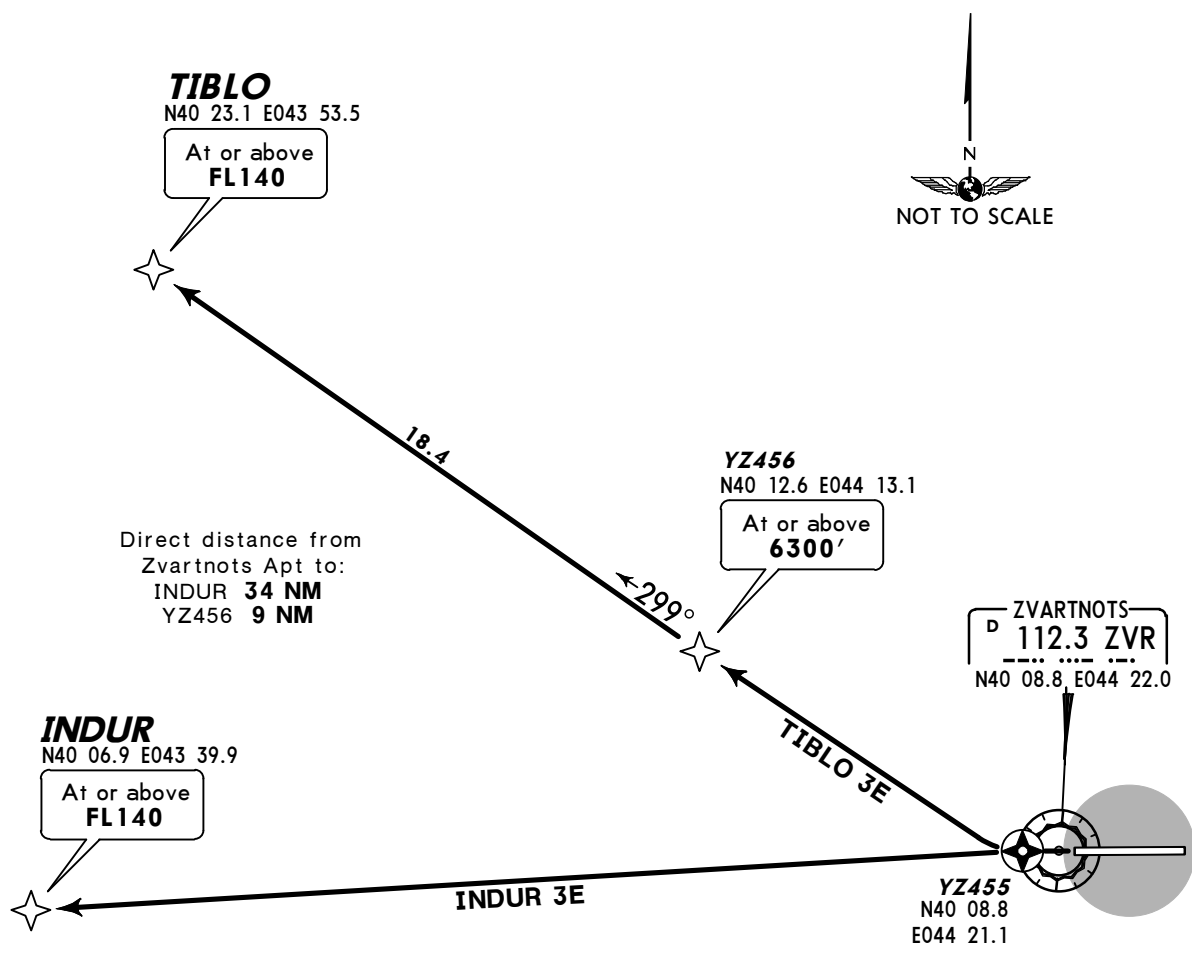
YEREVAN Approach 126.0
Apt Elev 2838'

Trans level: By ATC Trans alt: 11500'

- Contact YEREVAN Approach immediately after take-off.
- SIDs are also minimum noise routings. Strict adherence within the limits of performance criteria is mandatory.



INDUR 3E [INDU3E]
TIBLO 3E [TIBL3E]
RWY 27 RNAV DEPARTURES
RNAV 1 (GNSS)



These SIDs require minimum climb gradients of

INDUR 3E: 5.6% up to FL140.

TIBLO 3E: 6.9% up to 6300', then 6.6% up to FL140.

Gnd speed-KT	75	100	150	200	250	300
6.9% V/V(fpm)	524	699	1048	1398	1747	2096
6.6% V/V(fpm)	501	668	1003	1337	1671	2005
5.6% V/V(fpm)	425	567	851	1134	1418	1701

If unable to comply advise ATC prior take-off and request alternate clearance.

Initial turns MAX 210 KT, bank angle 20°

SID	ROUTING
INDUR 3E	YZ455 - INDUR (FL140+).
TIBLO 3E	YZ455 - YZ456 (6300'+) - TIBLO (FL140+).

CHANGES: SIDs replaced by RNAV SIDs.

UDYZ/EVN
ZVARTNOTS

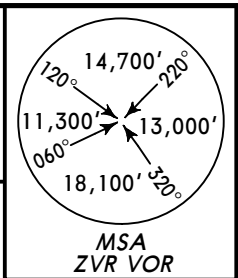
JEPPESEN
7 DEC 12 (10-3C) Eff 13 Dec

YEREVAN, ARMENIA
RNAV SID

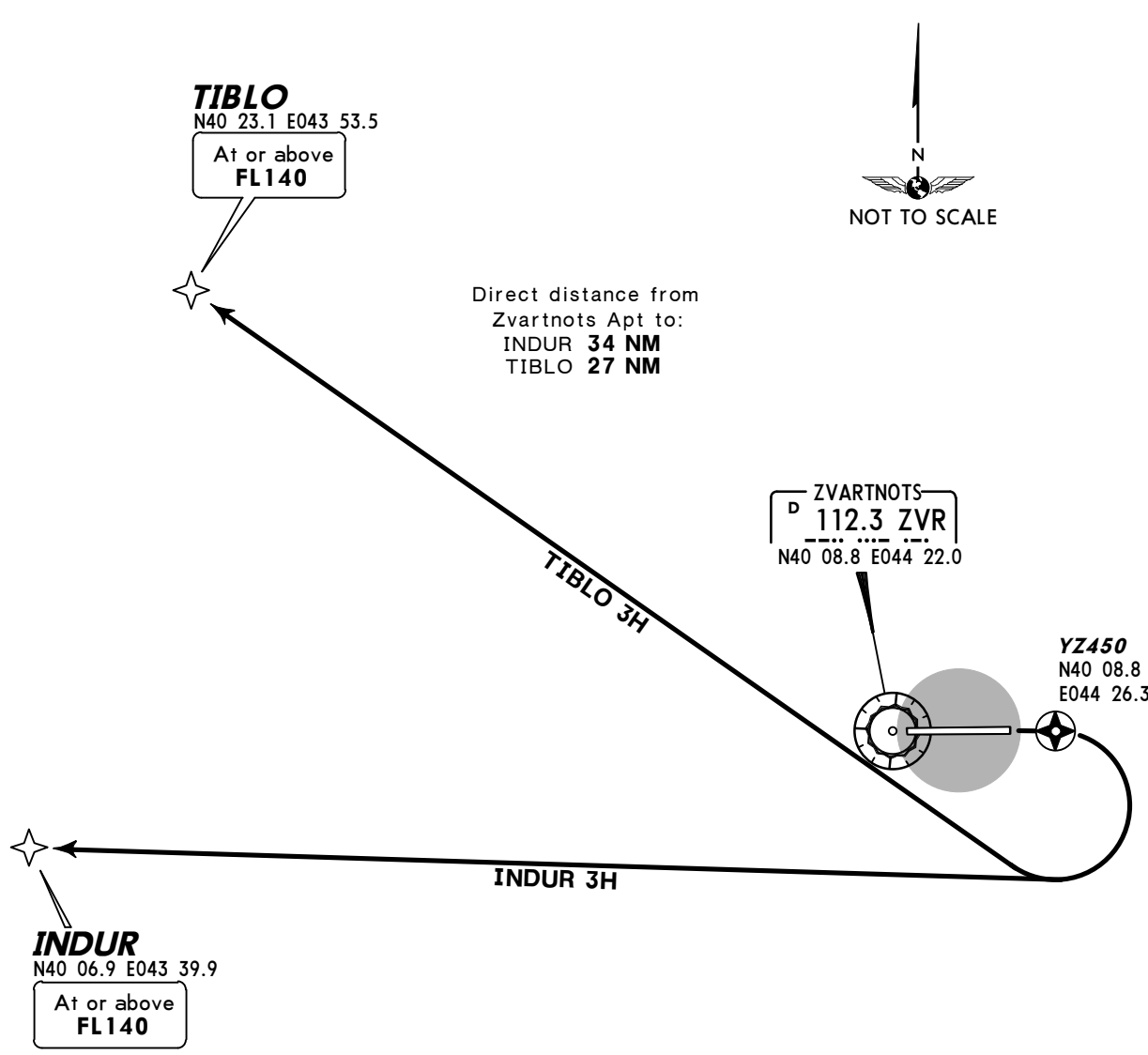
YEREVAN
Approach
126.0

Apt Elev
2838'

Trans level: By ATC Trans alt: 11500'
1. Contact YEREVAN Approach immediately after take-off.
2. SIDs are also minimum noise routings. Strict adherence within the limits of performance criteria is mandatory.



**INDUR 3H [INDU3H]
TIBLO 3H [TIBL3H]
RWY 09 RNAV DEPARTURES
RNAV 1 (GNSS)**



These SIDs require minimum climb gradients of
INDUR 3H: 4.6% up to FL140.
TIBLO 3H: 5.2% up to FL140.

Gnd speed-KT	75	100	150	200	250	300
5.2% V/V(fpm)	395	527	790	1053	1317	1580
4.6% V/V(fpm)	349	466	699	932	1165	1398

If unable to comply advise ATC prior take-off and request alternate clearance.

Initial turns MAX 210 KT, bank angle 20°

SID	ROUTING
INDUR 3H	YZ450 - INDUR (FL140+).
TIBLO 3H	YZ450 - TIBLO (FL140+).

CHANGES: SIDs replaced by RNAV SIDs.

UDYZ/EVN

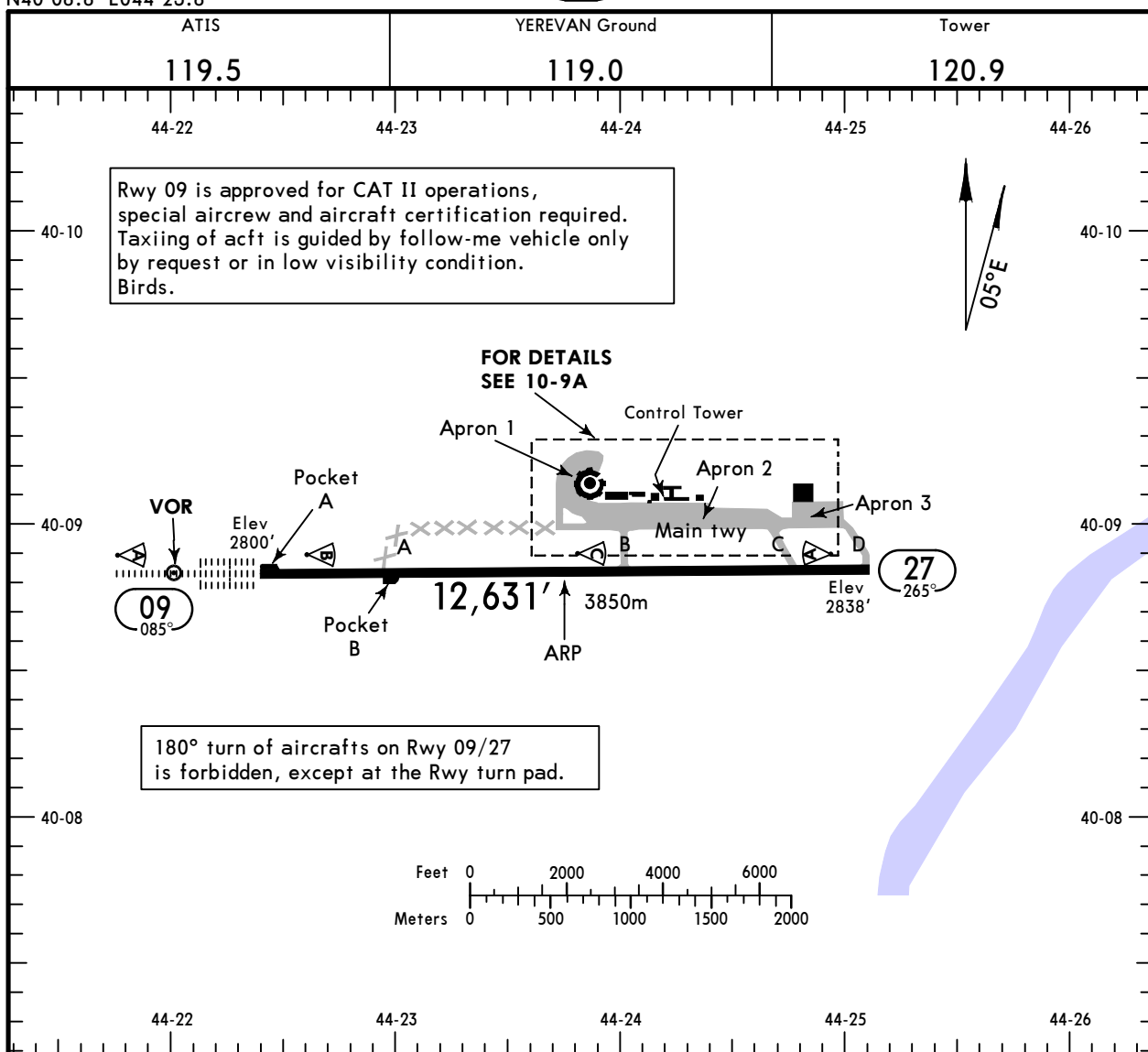
Apt Elev **2838'**
N40 08.8 E044 23.8



2 OCT 15 **(10-9)** Eff 15 Oct

YEREVAN, ARMENIA

ZVARTNOTS



Rwy 09 is approved for CAT II operations, special aircrew and aircraft certification required. Taxiing of acft is guided by follow-me vehicle only by request or in low visibility condition. Birds.

180° turn of aircrafts on Rwy 09/27 is forbidden, except at the Rwy turn pad.

ADDITIONAL RUNWAY INFORMATION

RWY	USABLE LENGTHS				WIDTH
	HIRL (60m)	CL (15m)	HIRL-II TDZ PAPI-L	RVR	
09	HIRL (60m)	CL (15m)	HIRL-II TDZ PAPI-L	RVR	184' 56m
27	HIRL (60m)	CL (15m)	PAPI-L (angle 3.5°)	RVR	

① (angle 3.0°)

② TAKE-OFF RUN AVAILABLE

RWY	From rwy head	From twy A int	RWY 27: From rwy head	From twy C int	From twy B int
09	12,631' (3850m)	10,121' (3085m)	12,631' (3850m)	10,991' (3350m)	7546' (2300m)

JAR-OPS TAKE-OFF 1

All Rwys

LVP must be in force

Approved Operators	HIRL, CL & mult. RVR req	RL, CL & mult. RVR req	RL & CL	RCLM (DAY only) or RL	RCLM (DAY only) or RL	NIL (DAY only)
A						
B	125m	150m	200m	250m	400m	500m
C						
D	150m	200m	250m	300m		

① Operators applying U.S. Ops Specs: CL required below 300m; approved HUD required below 150m.

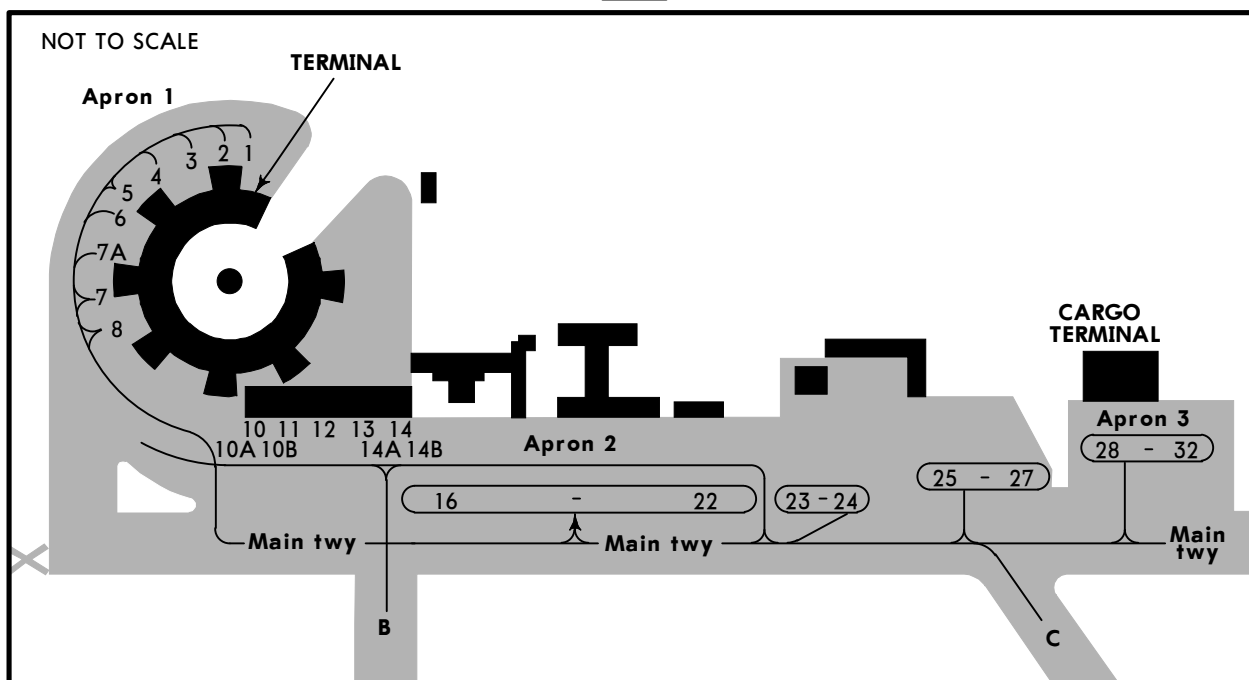
NOISE ABATEMENT PROCEDURE

1. Preferential rwy for approach is Rwy 09, preferential rwy for take-off is Rwy 27.
2. In case of take-off from Rwy 27 turn is performed before or after overflying of city of Etchmiadzin. Low overflying of city of Etchmiadzin is prohibited.

UDYZ/EVN

JEPPESEN
2 OCT 15 (10-9A) Eff 15 Oct

YEREVAN, ARMENIA
ZVARTNOTS



WARNING:
Exit from stand 16 thru 22 to Main twy is via Apron 2 btn stands 22 and 23.

INS COORDINATES

STAND No.	COORDINATES	STAND No.	COORDINATES
1	N40 09.2 E044 23.9	23	N40 09.0 E044 24.4
2 thru 4	N40 09.2 E044 23.8	24	N40 09.0 E044 24.5
5 thru 8	N40 09.1 E044 23.8	25 thru 27	N40 09.0 E044 24.6
10, 10A	N40 09.1 E044 23.9	28, 29	N40 09.1 E044 24.8
10B	N40 09.0 E044 23.9	30, 31	N40 09.1 E044 24.9
11 thru 13	N40 09.1 E044 24.0	32	N40 09.1 E044 25.0
14, 14A, 14B	N40 09.1 E044 24.1		
16	N40 09.0 E044 24.1		
17 thru 20	N40 09.0 E044 24.2		
21, 22	N40 09.0 E044 24.3		

UDYZ/EVN



12 JUL 13

10-9S

Eff 25 Jul

Standard
YEREVAN, ARMENIA
ZVARTNOTS

STRAIGHT-IN RWY		A	B	C	D
09	CAT 2 ILS	2900'(100')	2900'(100')	2900'(100')	2900'(100')
		RA 100' R300m	RA 100' R300m	RA 100' R300m	RA 100' R300m
	ILS	3000'(200')	3000'(200')	3000'(200')	3000'(200')
	FULL	R550m	R550m	R550m	R550m
	Limited	R750m	R750m	R750m	R750m
	ALS out	R1200m	R1200m	R1200m	R1200m
	LOC ①	3210'(410')	3210'(410')	3210'(410')	3210'(410')
		R1200m	R1200m	R1200m	R1200m
	ALS out	R1500m	R1500m	R1900m	R1900m
	RNAV (LNAV/VNAV)	3150'(350')	3150'(350')	3150'(350')	3150'(350')
	R900m	R900m	R900m	R900m	
ALS out	R1500m	R1500m	R1600m	R1600m	
RNAV (LNAV) ①	3230'(430')	3230'(430')	3230'(430')	3230'(430')	
	R1300m	R1300m	R1300m	R1300m	
ALS out	R1500m	R1500m	R2000m	R2000m	
VOR ①	3210'(410')	3210'(410')	3210'(410')	3210'(410')	
	R1200m	R1200m	R1200m	R1200m	
ALS out	R1500m	R1500m	R1900m	R1900m	
27	RNAV (LNAV) ①②	3400'(562')	3400'(562')	3400'(562')	3400'(562')
		R1500m	R1500m	C2400m	C2400m
	RNAV (LNAV) ①③	4600'(1762')	4600'(1762')	4600'(1762')	4600'(1762')
		C5000m	C5000m	C5000m	C5000m

- ① Continuous Descent Final Approach.
- ② Missed apch climb gradient mim 3.2%.
- ③ Missed apch climb gradient mim 2.5%.

CIRCLE-TO-LAND ④⑤	100 KT	135 KT	180 KT	205 KT
WITH PRESCRIBED FLIGHT TRACKS Rwy 27	3500'(662') 4000m	3500'(662') 4000m	3630'(792') 5000m	3630'(792') 5000m

- ④ CAUTION: Not authorized North of airport.
- ⑤ NIGHT: NOT AUTHORIZED.

TAKE-OFF RWY 09, 27

	LVP must be in Force					
	Approved Operators HIRL, CL & mult. RVR req	RL, CL & mult. RVR req	RL & CL	RCLM (DAY only) or RL	RCLM (DAY only) or RL	NIL (DAY only)
A						
B	125m	150m	200m	250m	400m	500m
C						
D	150m	200m	250m	300m		

UDYZ/EVN
ZVARTNOTS

JEPPESEN

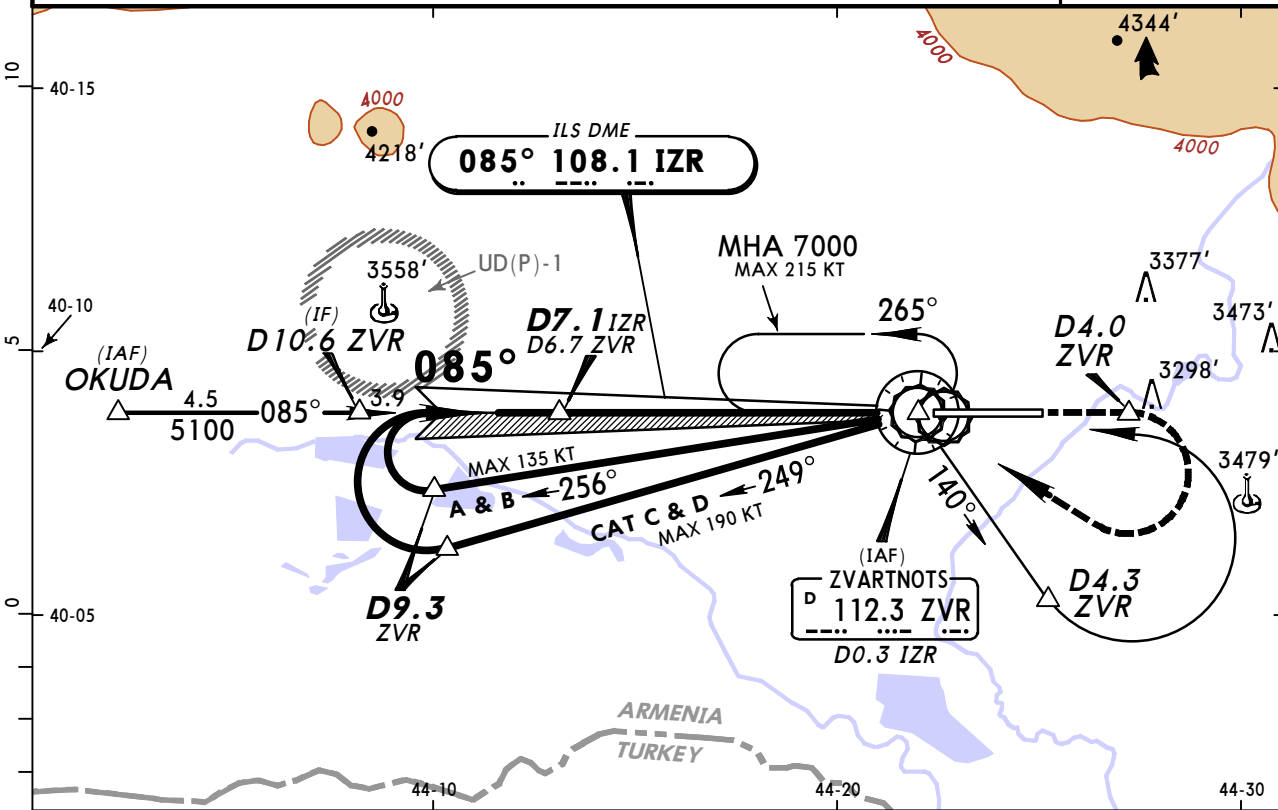
YEREVAN, ARMENIA
ILS DME Rwy 09

12 JUL 13

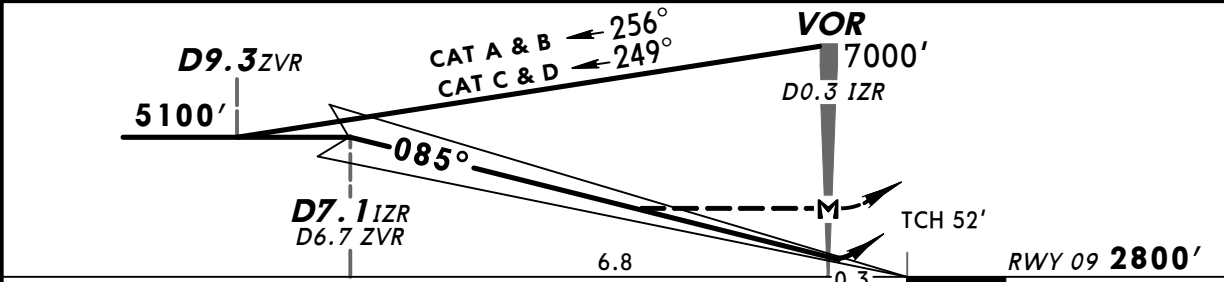
11-1

Eff 25 Jul

ATIS 119.5		YEREVAN Approach 126.0		YEREVAN Tower 120.9		Ground 119.0
LOC IZR 108.1	Final Apch Crs 085°	GS D7.1 IZR 5100' (2300')	ILS DA(H) 3000' (200')	Apt Elev 2838' RWY 2800'		
MISSED APCH: Climb STRAIGHT AHEAD to 3500' or D4.0 ZVR, whichever is earlier, then turn RIGHT (MAX 215 KT) to VOR climbing to 7000' to join holding, then according to chart.						
Alt Set: hPa		Rwy Elev: 98 hPa		Trans level: By ATC		Trans alt: 11,500'
1. In case of communication failure during radar vectoring, proceed to VOR at last cleared altitude but not below 7000'. 2. ILS DME reads zero at rwy 09 thresh.						MSA ZVR VOR



LOC (GS out)	IZR DME	7.0	5.9	4.9	3.8	2.7	1.6	0.5
	ALTITUDE	5090'	4750'	4400'	4060'	3720'	3370'	3030'



Gnd speed-Kts	70	90	100	120	140	160	HIALS-II PAPI	3500' whichever is earlier D4.0 ZVR
ILS GS or								
LOC Descent Angle	3.00°	372	478	531	637	743		
MAP at VOR/D0.3 IZR								

JAR-OPS				STRAIGHT-IN LANDING RWY 09		CIRCLE-TO-LAND	
ILS DA(H) 3000' (200')		LOC (GS out) MDA(H) 3210' (410')					
FULL		ALS out		ALS out			
A			RVR 900m		RVR 1500m	For CIRCLE-TO-LAND WITH PRESCRIBED FLIGHT TRACKS to rwy 27 see 19-10	
B			RVR 1000m		RVR 1800m		
C	RVR 550m	RVR 1000m			RVR 2000m		
D			RVR 1400m		RVR 2000m		

PANS OPS

UDYZ/EVN
ZVARTNOTS

JEPPESEN
12 JUL 13
Eff 25 Jul **(11-1A)**

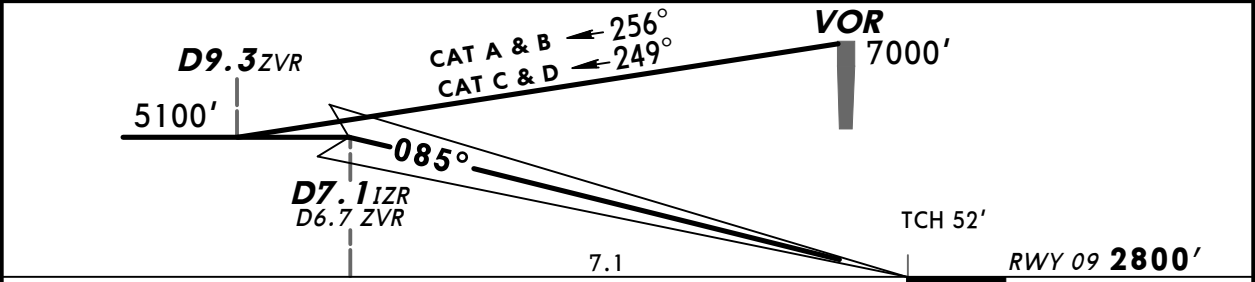
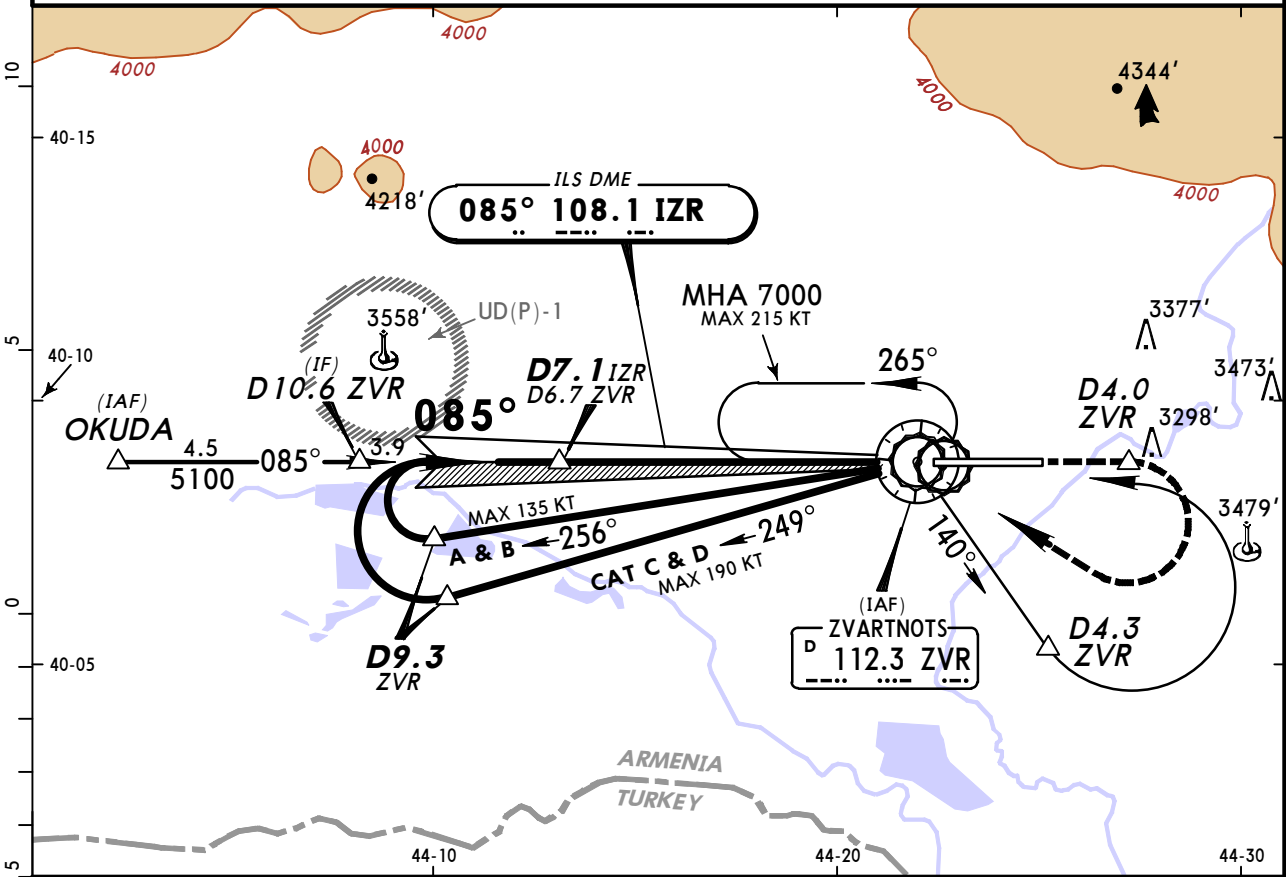
YEREVAN, ARMENIA
CAT II ILS DME Rwy 09

ATIS 119.5		YEREVAN Approach 126.0		YEREVAN Tower 120.9		Ground 119.0	
LOC IZR 108.1		Final Apch Crs 085°		GS D7.1 IZR 5100' (2300')		CAT II ILS RA 100' DA(H) 2900' (100')	
						Apt Elev 2838' RWY 2800'	

MSA
ZVR VOR

MISSED APCH: Climb STRAIGHT AHEAD to 3500' or D4.0 ZVR, whichever is earlier, then turn RIGHT (MAX 215 KT) to VOR climbing to 7000' to join holding, then according to chart.

Alt Set: hPa Rwy Elev: 98 hPa Trans level: By ATC Trans alt: 11,500'
 1. In case of communication failure during radar vectoring, proceed to VOR at last cleared altitude but not below 7000'. 2. Special Aircrew & Aircraft Certification Required. 3. ILS DME reads zero at rwy 09 thresh.



Gnd speed-Kts	70	90	100	120	140	160	HIALS-II PAPI
Descent Angle	3.00°	372	478	531	637	849	

JAR-OPS STRAIGHT-IN LANDING RWY 09
 CAT II ILS
RA 100'
 DA(H) **2900' (100')**

RVR **300m**

PANS OPS

Operators applying U.S. Ops Specs: Autoland or HUD required below 350m.
 CHANGES: LMM withdrawn. © JEPPESEN, 2004, 2013. ALL RIGHTS RESERVED.

UDYZ/EVN
ZVARTNOTS

JEPPESEN

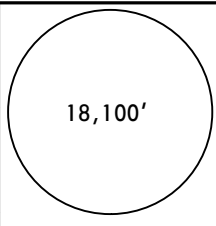
YEREVAN, ARMENIA

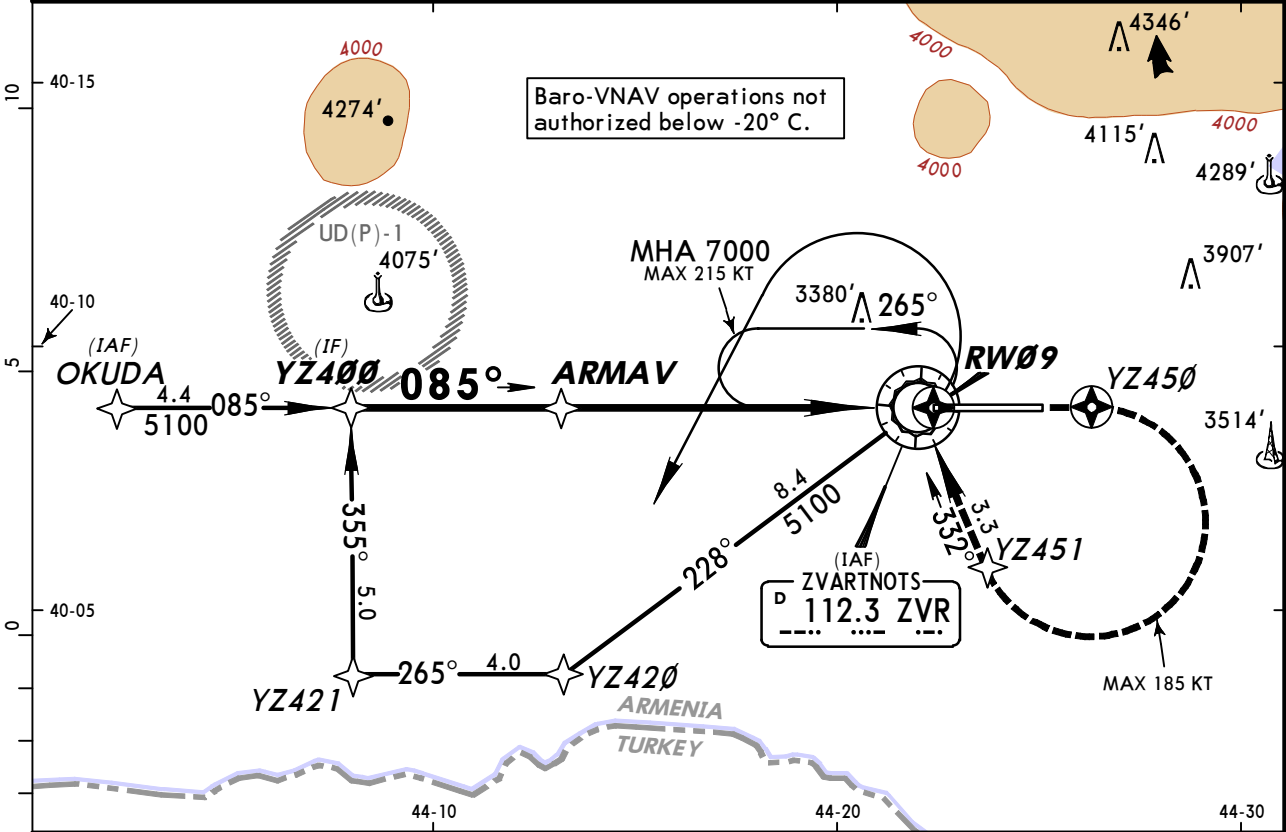
30 NOV 12

(12-1)

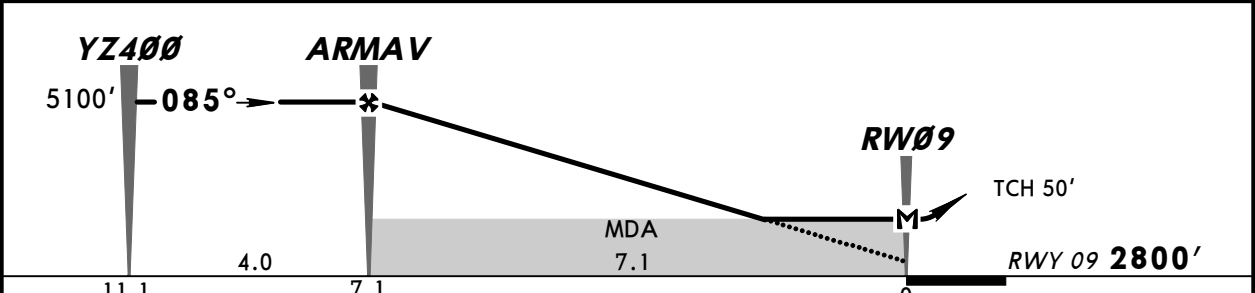
Eff 13 Dec

RNAV (GNSS) Rwy 09

ATIS 119.5		YEREVAN Approach 126.0		YEREVAN Tower 120.9		Ground 119.0	
RNAV	Final Apch Crs 085°	Procedure Alt ARMAV 5100' (2300')	LNAV/VNAV DA(H) 3150' (350')		Apt Elev 2838' RWY 2800'		 18,100' MSA ZVR VOR
MISSED APCH: Climb on track 085° to YZ450. Turn RIGHT (MAX 185 KT) via YZ451 onto 332° to VOR climbing to 7000' and hold.							
Alt Set: hPa Rwy Elev: 98 hPa Trans level: By ATC Trans alt: 11,500' In case of communication failure during radar vectoring, proceed to VOR at last cleared altitude but not below 7000'.							



NM to RW09	7.0	6.0	5.0	4.0	3.0	2.0
ALTITUDE	5090'	4770'	4450'	4130'	3810'	3490'



Gnd speed-Kts	70	90	100	120	140	160	HIALS-II PAPI	085° ↑ to YZ450
Descent Angle	3.00°	372	478	531	637	743		
MAP at RW09								

JAR-OPS				STRAIGHT-IN LANDING RWY 09			
LNAV/VNAV DA(H) 3150' (350')		ALS out		LNAV MDA(H) 3230' (430')		ALS out	
A	RVR 900m	RVR 1500m		RVR 900m		RVR 1500m	
B	RVR 1000m	RVR 1800m		RVR 1000m		RVR 1800m	
C	RVR 1400m	RVR 2000m		RVR 1400m		RVR 2000m	

PANS OPS

CHANGES: New procedure.

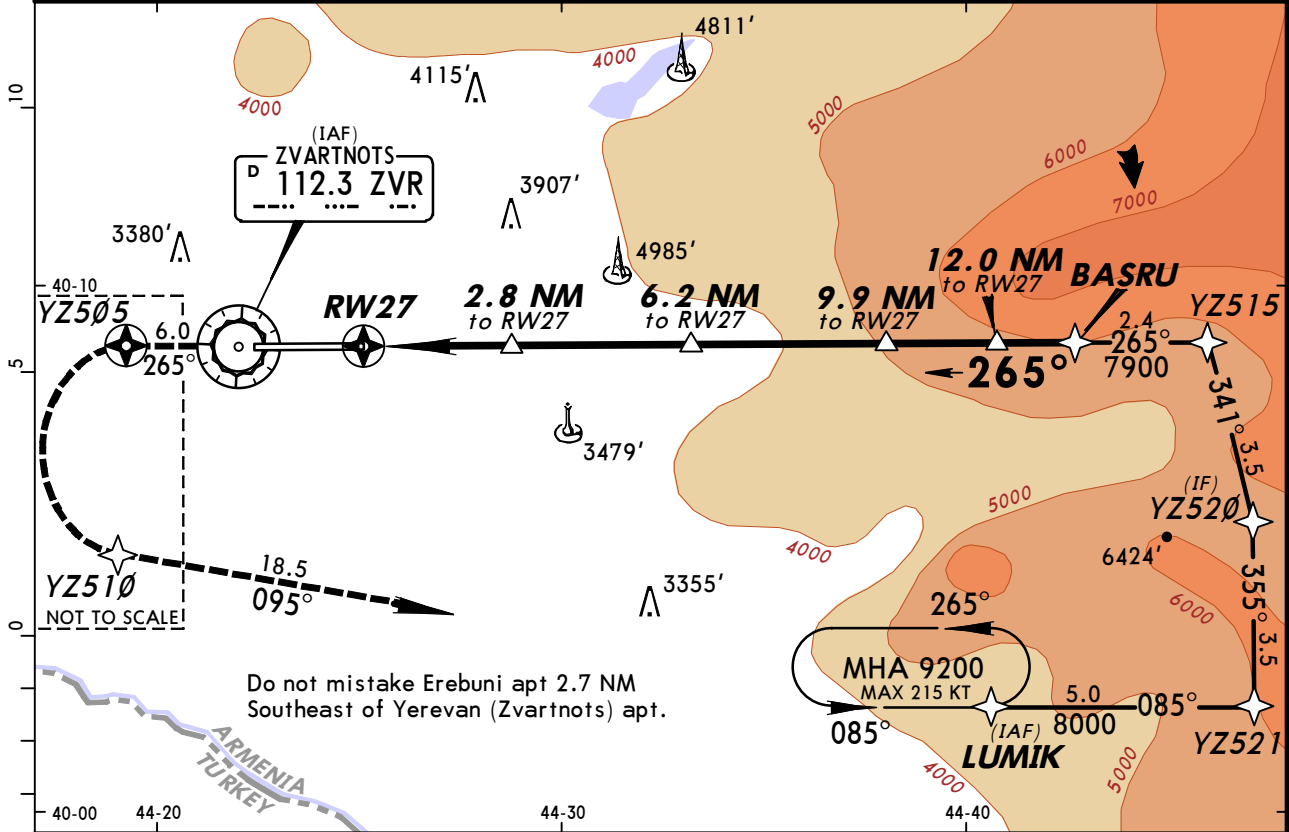
UDYZ/EVN ZVARTNOTS

JEPPESSEN

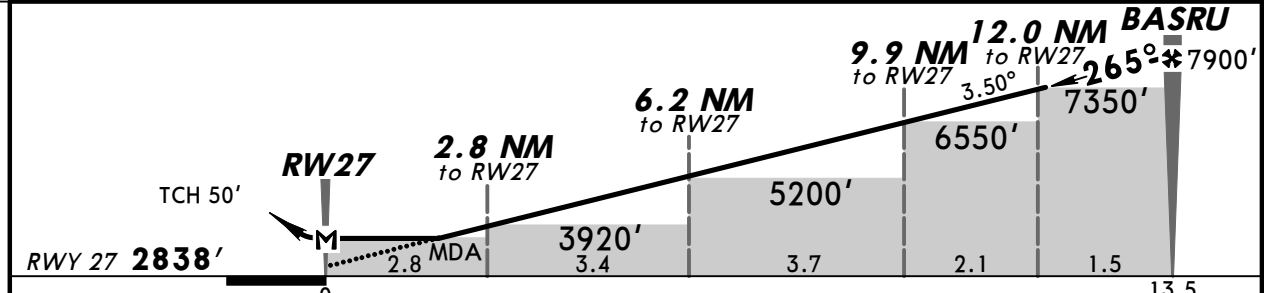
YEREVAN, ARMENIA

30 NOV 12 (12-2) Eff 13 Dec RNAV (GNSS) Rwy 27

ATIS 119.5		YEREVAN Approach 126.0		YEREVAN Tower 120.9		Ground 119.0	
RNAV		Final Apch Crs 265°	Procedure Alt BASRU 7900' (5062')	LNAV MDA(H) Refer to Minimums	Apt Elev 2838'	18,100'	
MISSED APCH: Climb on track 265° to YZ505. Turn LEFT (MAX 185 KT) via YZ510 onto 095° to LUMIK to 9200' and hold.							MSA ZVR VOR
Alt Set: hPa Rwy Elev: 100 hPa Trans level: By ATC Trans alt: 11,500' In case of communication failure during radar vectoring, proceed to VOR at last cleared altitude but not below 7000'.							



NM to RW27	2.0	3.0	4.0	5.0	6.0	7.0	8.0	9.0	10.0	10.8	13.0
ALTITUDE	3640'	4010'	4380'	4750'	5120'	5490'	5860'	6230'	6610'	6980'	7720'



Gnd speed-Kts	70	90	100	120	140	160	PAPI-L	265° ↑ to YZ505	
Descent Angle	3.50°	434	557	619	743	867			991
MAP at RW27									

JAR-OPS		STRAIGHT-IN LANDING RWY 27	
Missed apch climb gradient mim 3.2% MDA(H) 3400' (562')		Missed apch climb gradient mim 2.5% MDA(H) 4600' (1762')	
A	RVR 1500m	RVR 1500m	
B	RVR 1500m	RVR 1500m	
C	RVR 2000m	RVR 2000m	
D	RVR 2000m	RVR 2000m	

PANS OPS

UDYZ/EVN ZVARTNOTS



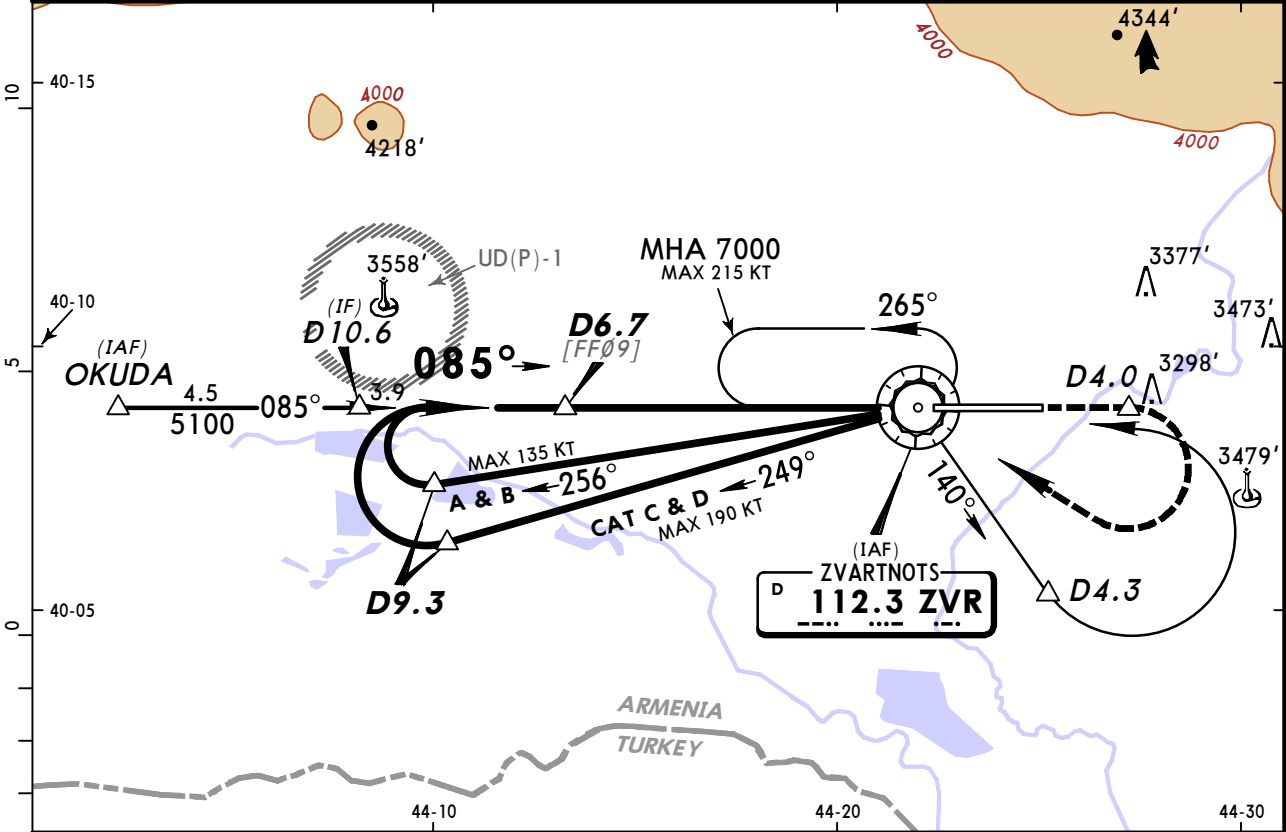
12 JUL 13

13-1

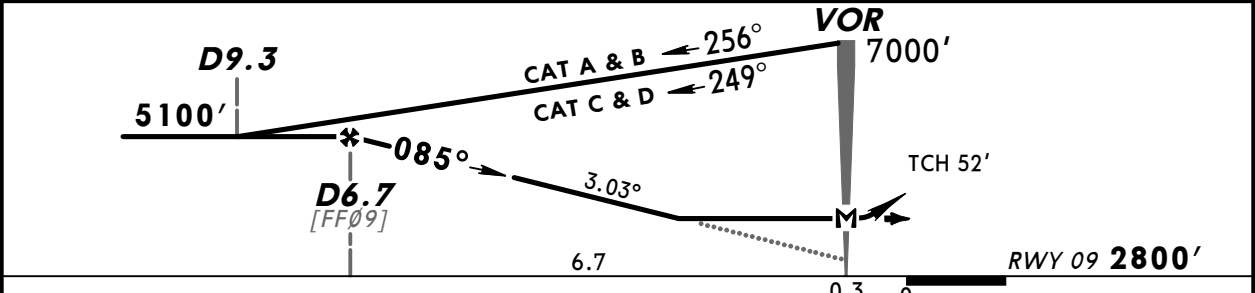
Eff 25 Jul

YEREVAN, ARMENIA VOR DME Rwy 09

ATIS 119.5		YEREVAN Approach 126.0		YEREVAN Tower 120.9		Ground 119.0
VOR ZVR 112.3	Final Apch Crs 085°	Minimum Alt D6.7 5100' (2300')	MDA(H) 3210' (410')	Apt Elev 2838' RWY 2800'		
MISSED APCH: Climb STRAIGHT AHEAD to 3500' or D4.0, whichever is earlier, then turn RIGHT (MAX 215 KT) to VOR climbing to 7000' to join holding, then according to chart.						MSA ZVR VOR
Alt Set: hPa Rwy Elev: 98 hPa Trans level: By ATC Trans alt: 11,500' In case of communication failure during radar vectoring, proceed to VOR at last cleared altitude but not below 7000'.						



ZVR DME	5.9	4.9	3.8	2.7	1.6	0.5
ALTITUDE	4840'	4500'	4160'	3810'	3470'	3120'



HIALS-II	3500'	whichever is earlier	D4.0
PAPI			

JAR-OPS		STRAIGHT-IN LANDING RWY 09		CIRCLE-TO-LAND	
		MDA(H) 3210' (410')			
		ALS out			
A	RVR 900m				
B	RVR 1000m	RVR 1500m			
C	RVR 1400m	RVR 1800m			
D	RVR 2000m	RVR 2000m			
For CIRCLE-TO-LAND WITH PRESCRIBED FLIGHT TRACKS to rwy 27 see 19-10					

PANS OPS

CHANGES: Lctr withdrawn.

UDYZ/EVN
Apt Elev **2838'**

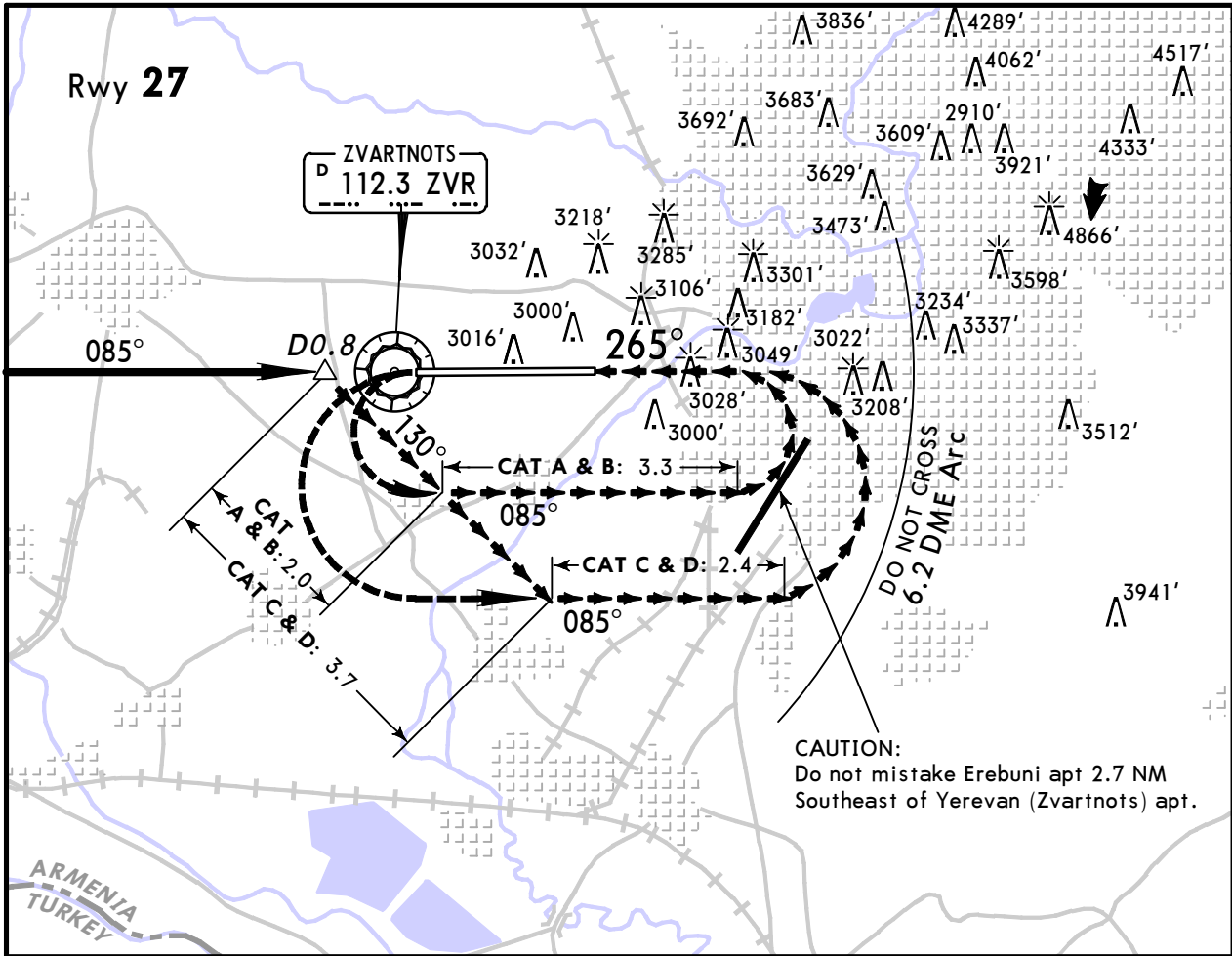
12 JUL 13

19-10

Eff 25 Jul

YEREVAN, ARMENIA
ZVARTNOTS

CIRCLE-TO-LAND
WITH PRESCRIBED FLIGHT TRACKS



CAUTION: Final turn w/o descent. Do not cross 6.2 DME Arc.

MISSED APCH:

Climb STRAIGHT AHEAD to MDA(H) to VOR, then turn LEFT onto 085°, then according to chart.

JAR-OPS

CAUTION: Not authorized North of airport

		DAY		NIGHT
		MDA(H)	VIS	
A	100	3500' (662')	4000m	NOT AUTHORIZED
B	135			
C	180	3630' (792')	5000m	
D	185			

UDYZ/EVN

JEPPESSEN

YEREVAN, ARMENIA

12 JUL 13

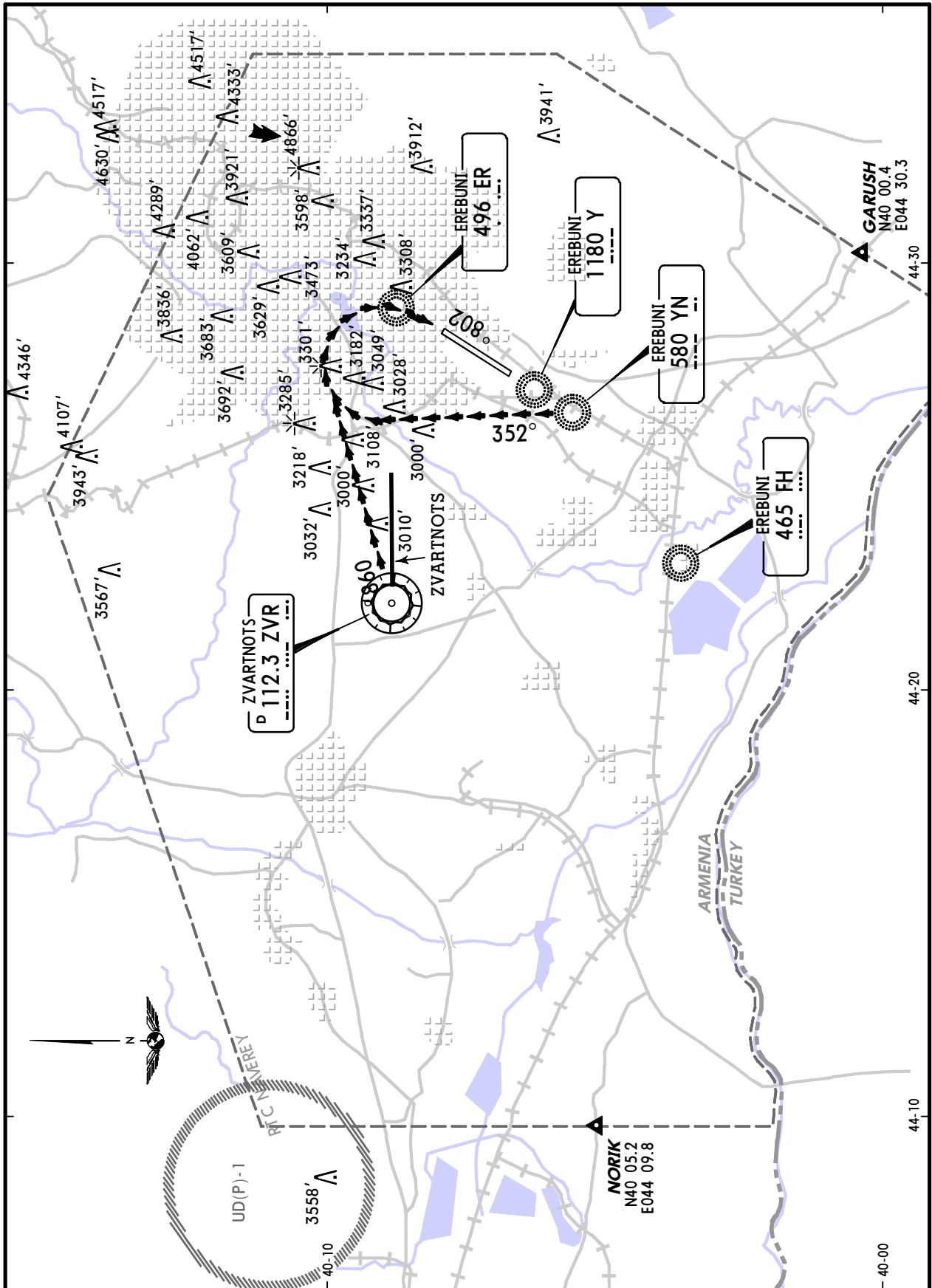
19-11

Eff 25 Jul

ZVARTNOTS

Apt Elev **2838'**

VISUAL APPROACH



Visual approach to RWY 27 at ZVARTNOTS apt authorized only SOUTH of airport only.

Visual approach to RWY 21 at EREBUNI apt authorized by prescribed routes only for acct CAT A & B.

Chart changes since cycle 22-2015

ADD = added chart, REV = revised chart, DEL = deleted chart.

ACT	PROCEDURE IDENT	INDEX	REV DATE	EFF DATE
-----	-----------------	-------	----------	----------

YEREVAN, (ZVARTNOTS - UDYZ)

TERMINAL CHART CHANGE NOTICES

No Chart Change Notices for Airport UDYZ